

Congratulations on your purchase of an Arnett® air suspension product. We at Arnett Incorporated are proud to offer a high quality product at the industry's most competitive pricing. Thank you for your confidence in us and our product.

Proper installation is essential to experience and appreciate the benefits of this system. Please take a moment to review these installation instructions before you begin to install these components on your vehicle. The removal and installation of air suspension products should only be performed by a fully qualified, ASE Certified, professional.

It is equally important to be aware of all necessary safety measures while installing your new Air Suspension System. This includes proper lifting and immobilizing of the vehicle and isolation of any stored energy to prevent personal injury or property damage.

## "Engineered to Ride, Built to Last®"



**WARNING:** *The air suspension system is under pressure (up to 10 bar, or 150 lbf/in). Verify pressure has been relieved and disconnect power to the air suspension system prior to disassembly. Do not allow dirt or grease to enter the system. Always wear standard hand, ear, and eye protection when servicing the air suspension system.*

**Arnett® is committed to the quality of its products. If you have a question or problem with any Arnett product, please contact Arnett by calling 800-251-8993 during normal business hours or email [techassistance@arnottinc.com](mailto:techassistance@arnottinc.com). (In the EU please call +31 (0)73 7850 580 or email [info@arnotteurope.com](mailto:info@arnotteurope.com))**

## GENERAL INFORMATION:

*Reading this manual signifies your agreement to the terms of the general release, waiver of liability, and hold harmless agreement, the full text of which is available at [www.arnottinc.com](http://www.arnottinc.com).*

- Not to be stored below 5°F (-15°C) or above 122°F (50°C).
- Avoid damage to air lines and cables.
- Removal and installation is only to be performed by fully qualified personnel.
- Use car manufacturer's diagnostic software.

**CAUTION:** *Damage to the vehicle and air suspension system can be incurred if work is carried out in a manner other than specified in the instructions or in a different sequence.*



*To avoid the possibility of short circuits while working with electric components consult your owner's manual on how to disconnect your battery.*



*Consult your vehicle owner's manual, service manual, or car dealer for the correct jacking points on your vehicle and for additional care, safety and maintenance instructions. Under no circumstances should any work be completed underneath the vehicle if it is not adequately supported, as serious injuries and death can occur.*

## AIR SUSPENSION COMPRESSOR ASSEMBLY REMOVAL

1. Raise the vehicle to locate the air suspension compressor assembly under the rear left side of the vehicle. (FIGURE 10-1)



FIGURE 10-1

2. Remove the four (4) bolts holding the compressor cover to the vehicle. (FIGURES 10-2, 10-3, 10-4, 10-5)



FIGURE 10-2



FIGURE 10-3



FIGURE 10-4

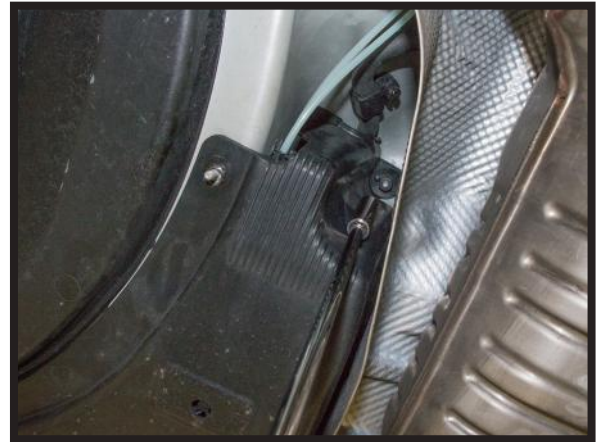


FIGURE 10-5

3. Remove the cover to access the compressor assembly. (FIGURE 10-6)



FIGURE 10-6

4. Remove the air line from the compressor assembly. (FIGURES 10-7, 10-8)

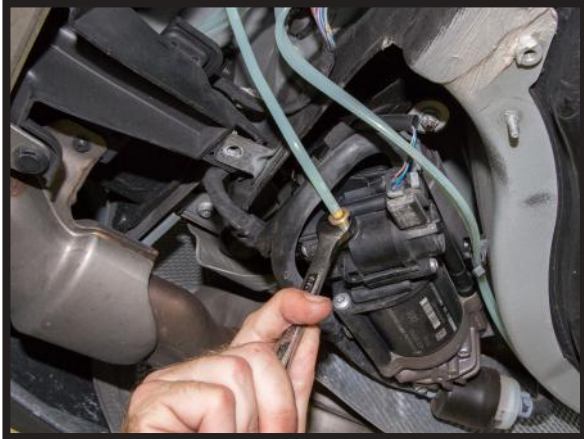


FIGURE 10-7



FIGURE 10-8

5. Locate and disconnect the two (2) electrical connectors from the compressor assembly. (FIGURES 10-9, 10-10)



FIGURE 10-9



FIGURE 10-10

6. Locate and disconnect the intake hose from the compressor assembly. (FIGURES 10-11, 10-12)

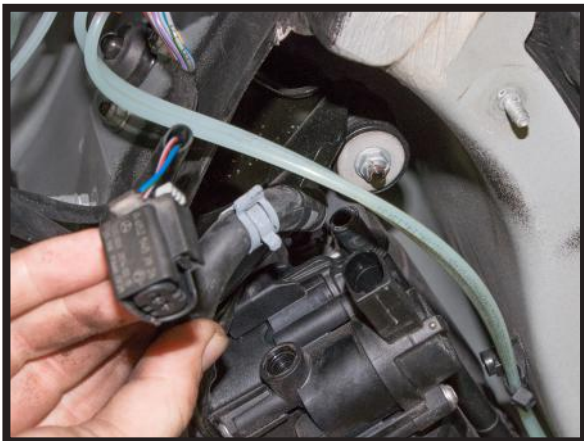


FIGURE 10-11

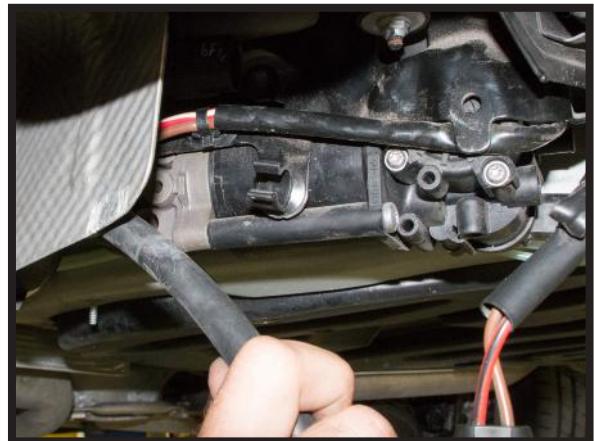


FIGURE 10-12

7. Remove the three (3) mounting nuts and hardware holding the compressor assembly to the vehicle. (FIGURES 10-13, 10-14, 10-15, 10-16)



FIGURE 10-13



FIGURE 10-14

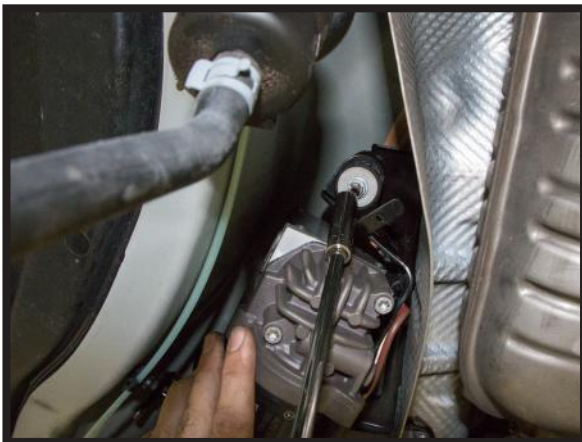


FIGURE 10-15



FIGURE 10-16

8. Remove the compressor assembly from the vehicle. (FIGURES 10-17, 10-18)



FIGURE 10-17

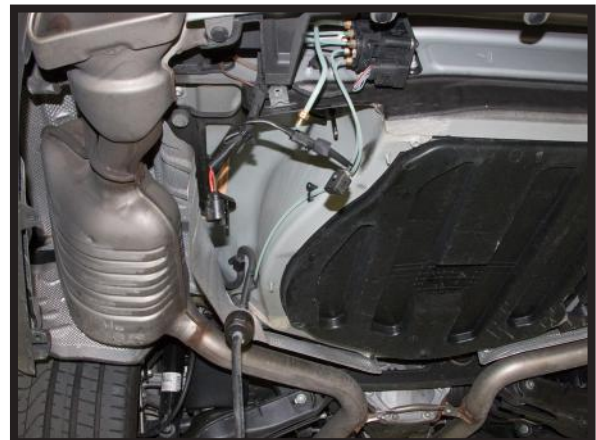


FIGURE 10-18

## AIR SUSPENSION COMPRESSOR REMOVAL

1. Place the compressor assembly on a work bench or other adequate work surface.
2. Remove the three (3) bolts holding the compressor to the mounting bracket. (FIGURE 20-1)



FIGURE 20-1

3. Unclip and remove the wiring harness from the compressor bracket. (FIGURES 20-2, 20-3)



FIGURE 20-2



FIGURE 20-3

4. Remove the compressor from the mounting bracket. (FIGURE 20-4)



FIGURE 20-4

## AIR SUSPENSION COMPRESSOR INSTALLATION



*Tighten all nuts and bolts to manufacturer's specifications during the installation process.*

1. Install the new compressor into the mounting bracket in the reverse order of removal.

## AIR SUSPENSION COMPRESSOR ASSEMBLY INSTALLATION



*Tighten all nuts and bolts to manufacturer's specifications during the installation process.*

1. Install the compressor assembly back into the vehicle in the reverse order of removal.

## AIR SUSPENSION COMPRESSOR RELAY



*Installation of this air suspension compressor requires the replacement of the compressor relay. Failure to replace the OE relay with the unit provided in this kit can cause damage and/or void warranty.*

1. Open the trunk and locate the compressor relay behind the left trunk panel. (FIGURE 30-1)



FIGURE 30-1

2. Replace the factory relay with the unit provided in this kit.



## WARNING



### **CRACKED AIR SPRINGS MUST BE CHANGED TO VALIDATE THE WARRANTY ON THE COMPRESSOR**

PLEASE READ ADDITIONAL WARRANTY INFORMATION ON THE BACK OF YOUR INVOICE



### **PROPER PROCEDURE FOR ASSESSING YOUR AIR SPRINGS CONDITION:**

1. Turn off air suspension switch if equipped.
2. Refer to owner's manual for proper lifting techniques and jacking points.
3. Raise the vehicle.
4. Inspect air springs for any type of cracks or excessive wear. Cracks in air springs are evident if they are leaking. This will cause the compressor to overheat from continuous operation.

Arnott<sup>®</sup> is committed to the quality of its products. If you have a question or problem with any Arnott product, please contact Arnott by calling [800-251-8993](tel:800-251-8993) during normal business hours or email [techassistance@arnottinc.com](mailto:techassistance@arnottinc.com)